



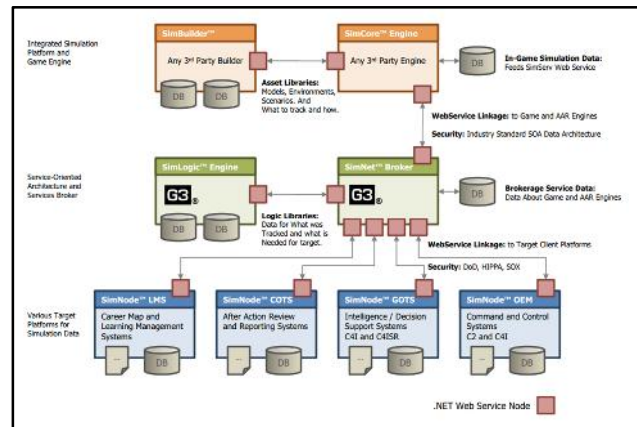
# Healthcare and Medical Solutions

## Introduction

G3 Systems, Inc. has developed platforms that can be applied to solving healthcare business and medical information needs.

## Modular Data Aggregation Architecture

At the core of all G3 solutions is our patent-pending Modular Data Aggregation Architecture (MDAA). MDAA allows small modular nodes of code to be deployed to link systems together that do not normally communicate with each other. G3 can enhance existing legacy systems by linking them together or replace existing systems allowing for enhancements in workflow, productivity and cloud services.



Proven Modular Data Aggregation Architecture

## Optimized Electronic Health Record

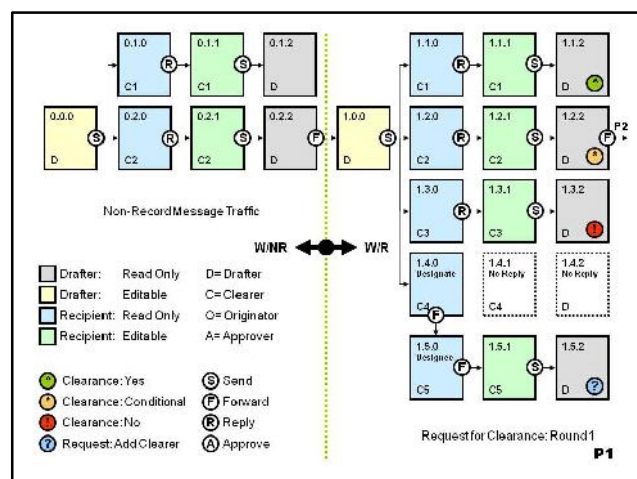
G3 helped develop the Personal Health Record for CVS/Caremark and the Accordant Nurse Portal. During that project, G3 created an optimized PHR and EHR that combined personal information, vitals, medical imaging as well as recent test results all in a single view in order to streamline the process of patient treatment and diagnosis. Originally designed to run on top of Epic and Vista, the solution was ultimately selected for the US Army Solider Healthcare Portal.



Integrated Diagnostic Portal with Test Results

## Dynamic Workflow Engine

One of the most difficult problems facing healthcare today is the loss of productivity associated with the implementation of electronic health record solutions. This loss of productivity costs healthcare billions of dollars a year. G3 has developed a dynamic workflow engine (DWE) that allows the workflow of its electronic health record to be modified dynamically based on business rules, logic, staffing and working conditions. Users will see the specific items they need and no longer waste valuable time clicking past dozens of useless screens. Less time on input means more time for quality of care.

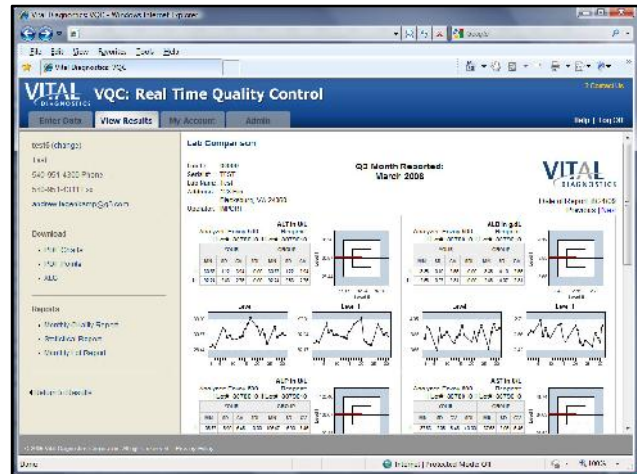


Dynamic Workflow Engine Adapts to Conditions



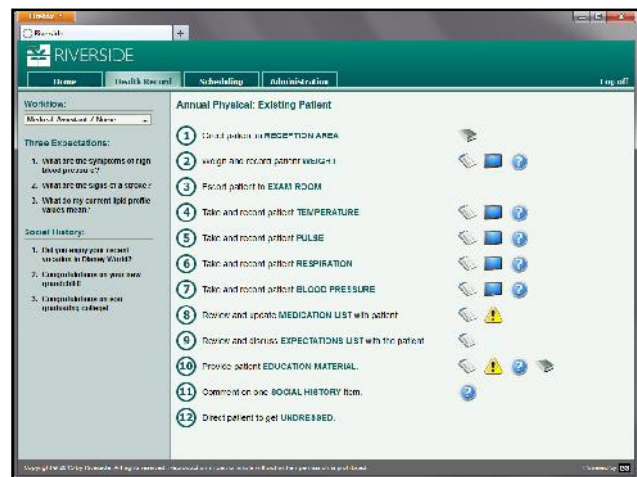
# Healthcare and Medical Solutions

**Medical Equipment Integration**  
 G3 developed real time quality control processes for laboratory testing for Vital Diagnostics that allows users to monitor the status and accuracy of all medical test equipment and analyzers. When you integrate this with the G3 Modular Data Architecture and the G3 Electronic Health Record it is possible to flag when analyzers are out of specification impacting the validity of test results that would otherwise be used for diagnostic purposes.



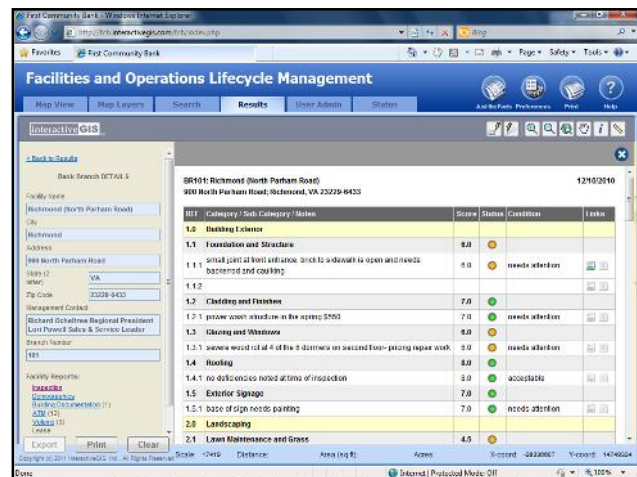
Real Time Quality Control of Medical Equipment

**Training and Compliance Toolkit**  
 Healthcare concerns regardless of size are only as good as the people and processes that ensures quality, consistency of care, repeatability and compliance. G3 developed our Training and Compliance (TAC) solution in 2007 to address the urgent need for a just-enough-just-in-time tool to help healthcare personnel step through complex tasks quickly and easily while ensuring adherence to procedures and Federal compliance requirements. TAC also reduces costly employee turnover by improving employee satisfaction and improving employee retention. TAC can reduce training time from one week per year to one day per year resulting in significant operational savings from increased productivity.



Just-Enough-Just-In-Time Training Toolkit

**Operations Lifecycle Management**  
 One of the final pieces critical to the long term success of any healthcare organization is the management of healthcare property assets on the basis of the lifecycle of that asset. While a new facility may be designed to last 50 years or more, all facilities will require annual maintenance, periodic major Capital Expenditure (CapX) improvements and reserve fund planning. G3 offers a comprehensive system to track and manage defects and overall conditions. This facilities solution can easily be provide an end-to-end view of costs and revenue by square foot or per person by personnel count.



Facilities and Operations Lifecycle Management